

WHETHER IT'S IN A
COMMUNITY...

OR IN THE
COUNTRY...

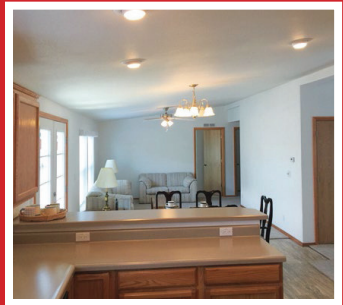
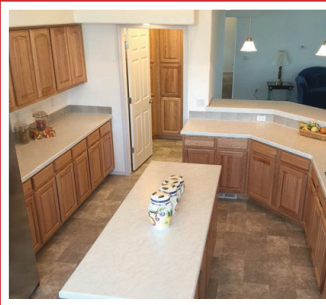


LARGEST DEALER IN WASHINGTON STATE FOR 30 CONSECUTIVE YEARS!

We Invite you to "Find out why"!

AFFORDABLE DOUBLE & TRIPLE SECTION HOMES UP TO 5 BDRM, 2720 SQ. FT.

Valley Quality Homes have Higher Structural Standards, Energy Efficiency and Modern Design.
SEE WHY WE ARE THE LEADER IN OUR INDUSTRY IN WASHINGTON STATE 40+ YEARS!



24 STANDARD FLOOR PLANS WITH CUSTOMIZATION AVAILABLE



SUPERIOR QUALITY HOMES & SERVICE AT THE MOST COMPETITIVE PRICES!

It is this type of commitment that we make to you that has given us national recognition in the housing industry.

- Plumbed w/ premium copper water lines. Copper has been shown to stop microbes, including Corona Virus.
- James Hardie Fiber Cement Siding w/ 30 year guarantee
- All homes are ENERGY STAR® certified
- 3/4" Tongue & Grooved Plywood Floor Decking
- 40 lb Roof Load STANDARD (65 lb & 120 lb Available)
- All batted fiberglass insulation by Johns Manville
- Top performing G.E. appliances
- Mohawk carpeting w/ 6 lb pad
- We deliver & assemble the home, on your location

4 MAJOR FACTORS

to consider when
purchasing your new home:

- We have been in business for **40+ YEARS** under the **SAME NAME** and **OWNERSHIP**.
- We are the **EXCLUSIVE DEALERS** of the **VALLEY MANUFACTURED HOMES**, built by us in Sunnyside, WA.
- We are the only factory HUD code builder in Washington.
- We have **MORE STRUCTURAL INTEGRITY** and more quality **STANDARD FEATURES** in our homes

STANDARD FEATURES FOUND IN EVERY HOME WE BUILD

- **Lifetime Warranty Faucets.** American Standard
- **2"x6" exterior wall studs** spaced 16" on center with 2"x6" top and bottom plates.
- **2"x4" interior wall studs** spaced 16" on center with 2"x4" top and bottom plates.
- **Nailed & hand tabbed 30 year shingles**, over a plywood subroof.
- **Prime windows** low 'e' argon-filled double-strength glass with Lifetime Warranty.
- **32" wheel chair accessible** interior doors with solid wood jambs, 3 mortised hinges, and real wood trim.
- **Full-size 13 1/2" eaves** all around homes - front, back and ends.
- **Electrical boxes nailed to wall studs.**
- **Real Oak cabinets**, framework screw assembled, and real Oak cabinet doors.

**FACTORY TOURS
AVAILABLE**



**COME SEE
US TODAY**

Valley Quality Homes

**60 DISPLAY
MODELS FOR YOU
TO VIEW NOW!**

SPOKANE

17123 E. Sprague • (509) 927-7472

MOSES LAKE

1835 W. Broadway • (509) 765-2236

YAKIMA

1830 S. 1st Street • (509) 453-8937

KENNEWICK

900 S. Ely • (509) 783-5473

www.ValleyQualityHomes.com

FAMILY OWNED & OPERATED SINCE 1979

**INVENTORY
ROTATION
SALE!**
Huge Discounts!
Prompt Delivery!